

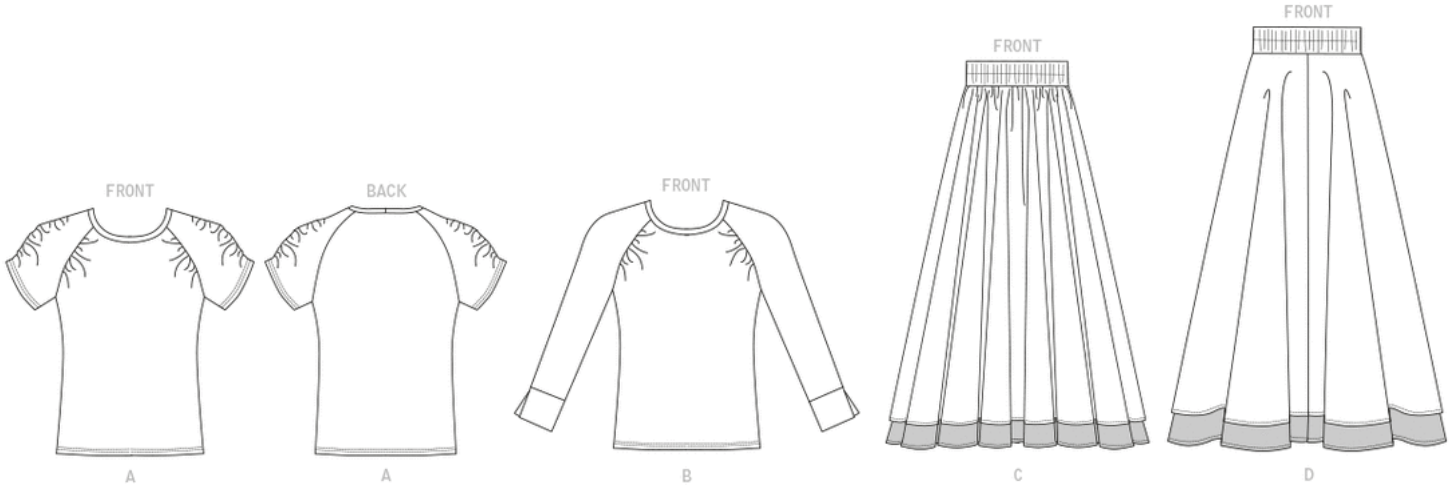
Today's Fit by Sandra Betzina

General fabric size requirements are listed to give you an idea of what you will need.

Go to WWW.POWERSEWING.COM to see Sandra's latest fashions.

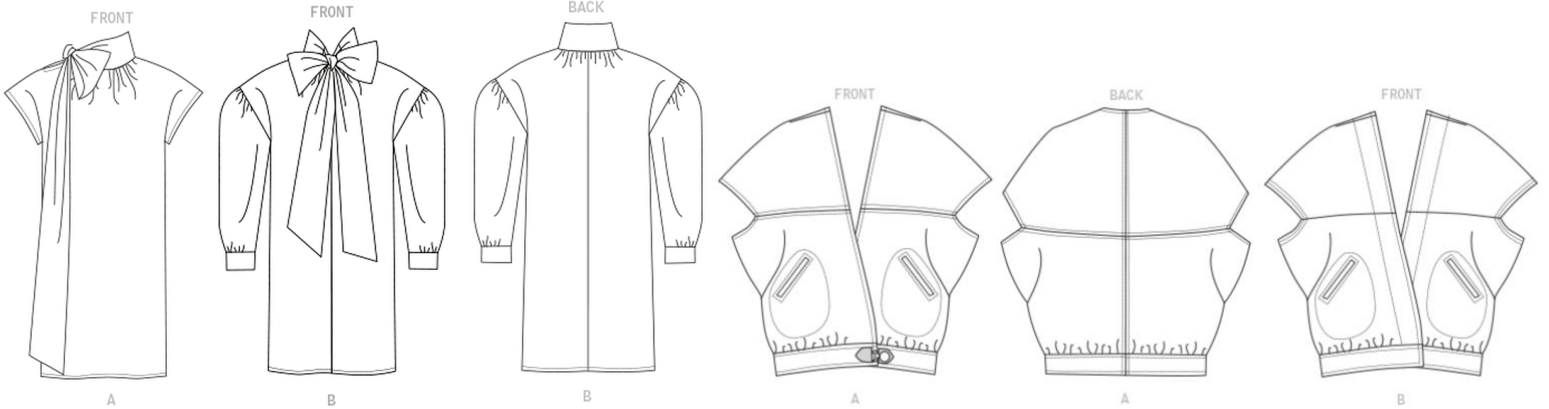
**Pattern illustrations are below their assigned pattern numbers*

Vogue 1705 A 60"- 1 1/2, B 60"- 1 3/4, C 60"- 4 1/2, D 60"- 4



Vogue 1695 A, B 45" - 4 3/8, 60" - 3 5/8

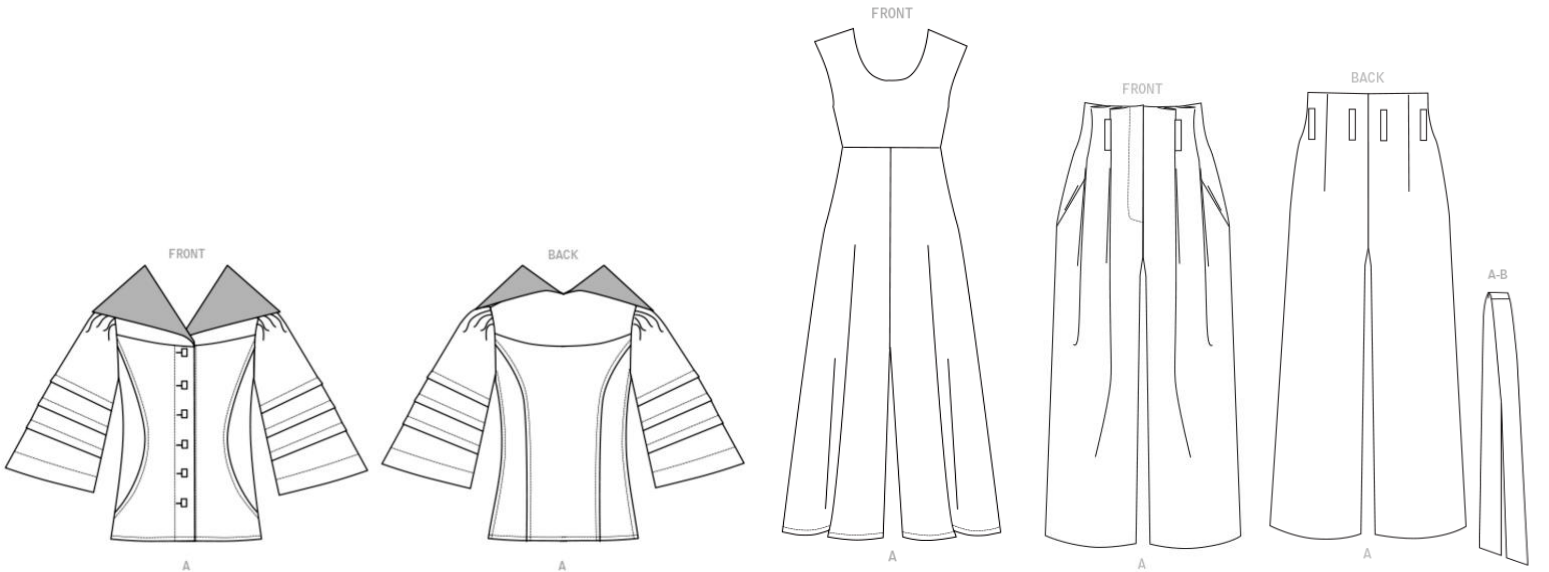
Vogue 1690 A, B 45" - 2 1/2, 60" - 2



Vogue 1682 A 45" - 2 7/8, 60" - 2 1/8
B 45" - 3 3/8, 60" - 2 3/8

Vogue 1664 A 60" - 3 1/4
B 60" - 2 3/4 t

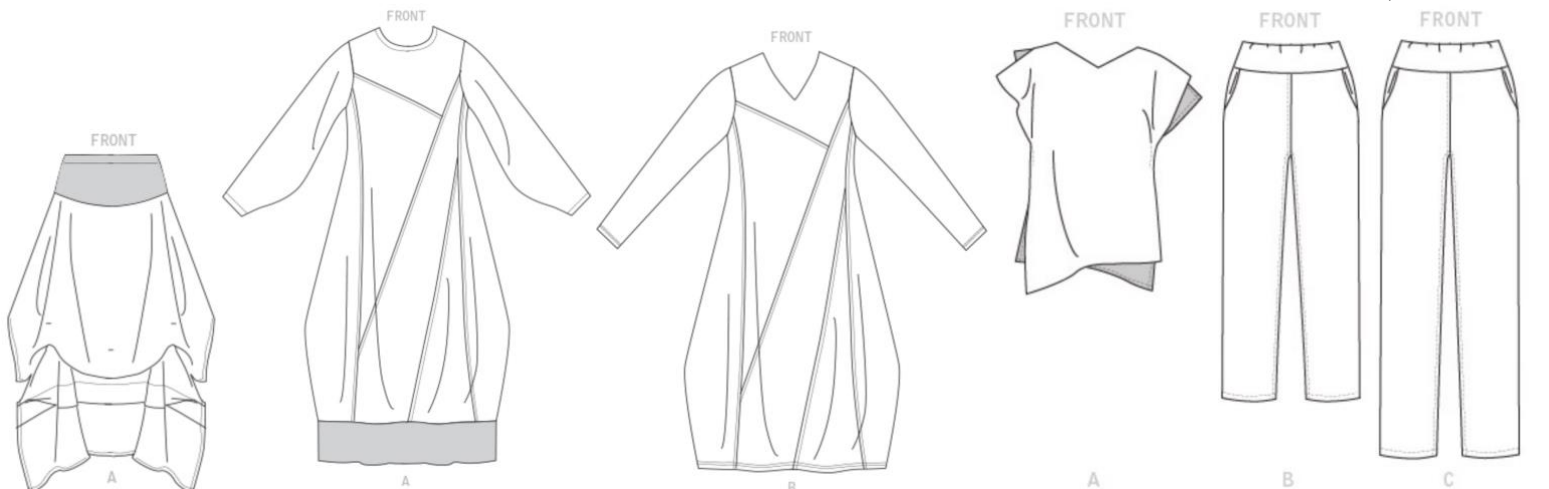
Vogue 1662 A 45" - 3 7/8, 60" - 3



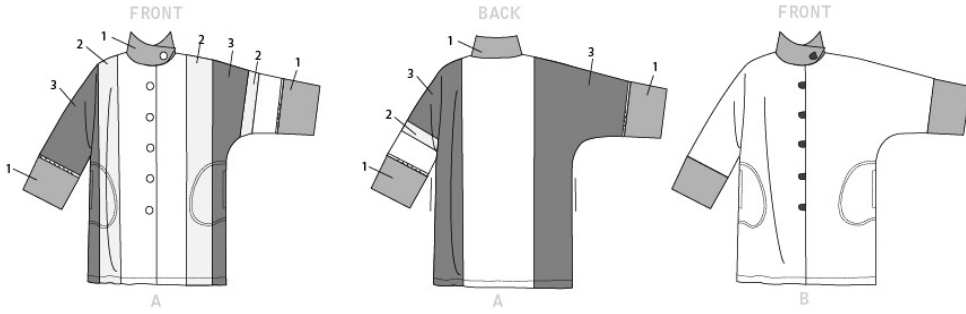
Vogue 1639 A 60" - 2 1/4
B 60" - 2 3/4

Vogue 1634 A 60" - 3 1/8, B 60" - 3

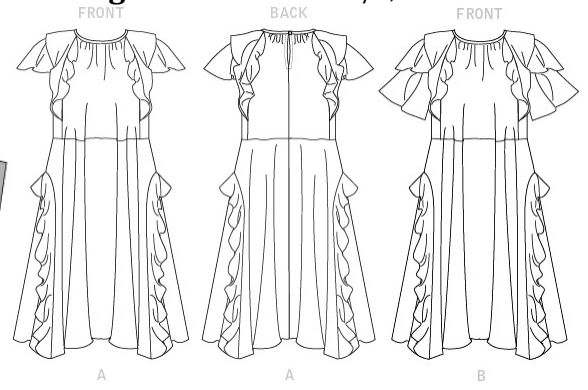
Vogue 1630 A 45" - 2, 60" - 1 1/8
B 60" - 1 3/4, C 60" - 2



Vogue 1621 A 45" - 2 3/8, 60" - 1 3/4, B 45" - 4 3/8, 60" - 2 3/4



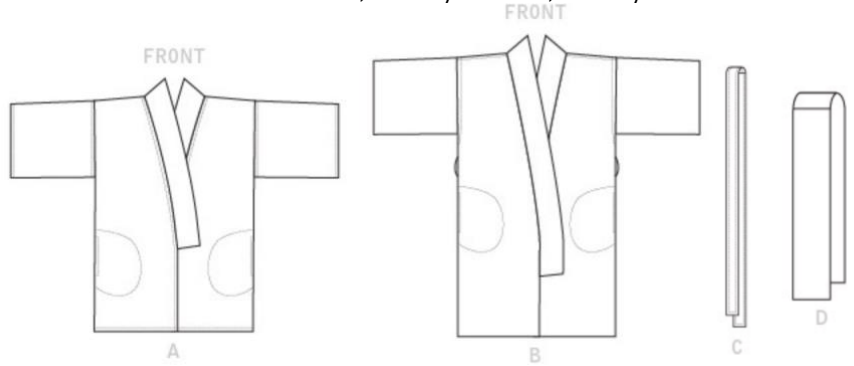
Vogue 1612 A 60"-4 5/8, A 60"-5 1/2



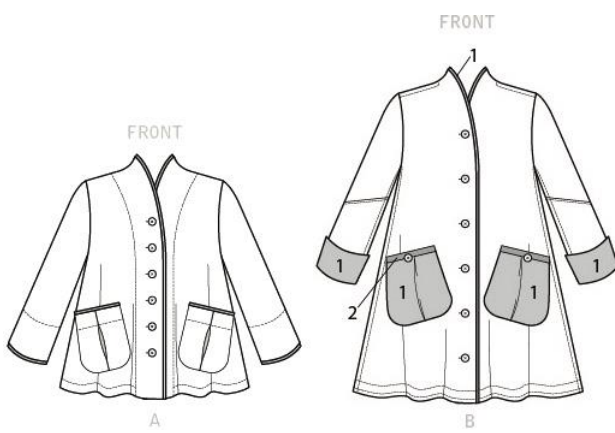
Vogue 1611 A 60" - 3, B 60" - 2 3/4
C 60" - 2



Vogue 1610 A 45", 60" - 3 1/4, B 45" - 4, 60" - 3 1/4
C 45", 60" - 3/8 D 45", 60" - 3/8



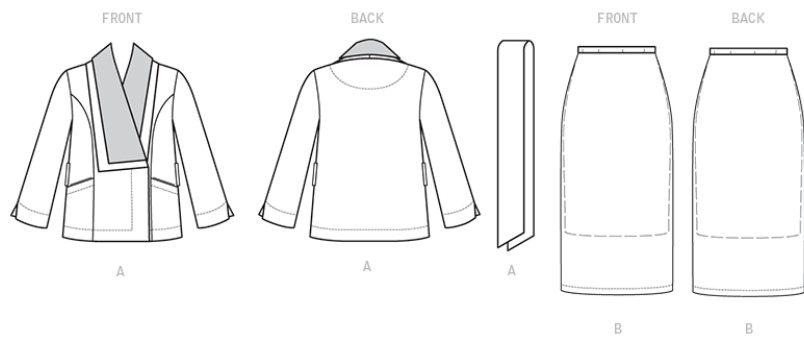
Vogue 1598 A 60" - 2 1/2, B 60" - 2 5/8, C 60" - 2 1/4



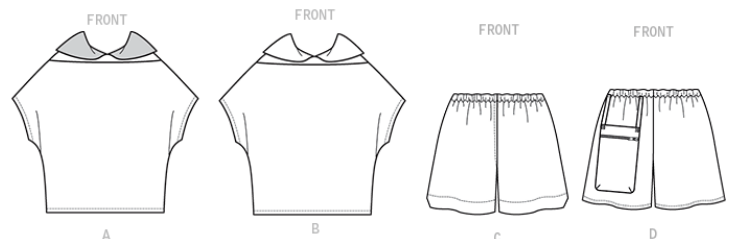
Vogue 1592 A 45" - 4 1/8, 60" - 3 1/4
B 45" - 3 1/2, 60" - 2 5/8



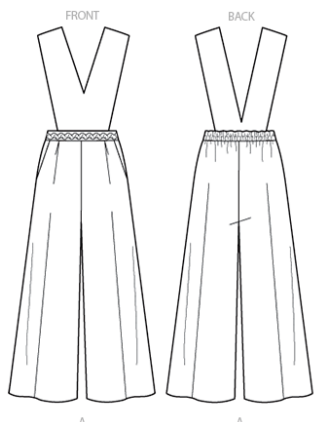
Vogue 1590 A 45" - 4 1/2, 60" - 3 B 45" - 1 7/8, 60" - 1



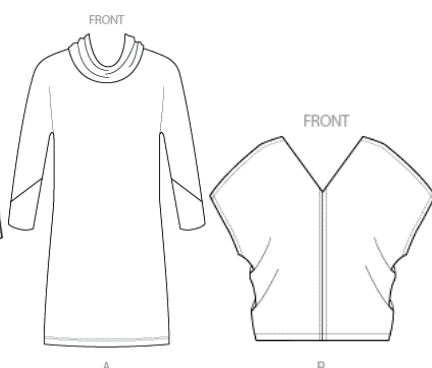
Vogue 1583 A 45", 60" - 2 B 45" - 2 1/2, 60" - 2
C 45", 60" - 1 1/2 D 45" - 1 1/2, 60" - 1 1/4



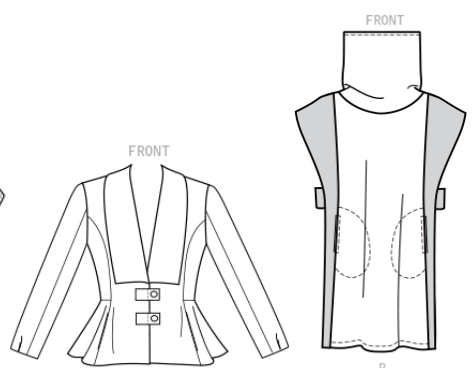
Vogue 1580 A 45" - 4, 60" - 3 1/4
B 45" - 2 3/4, 60" - 2 5/8



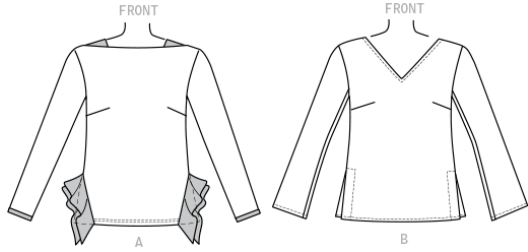
Vogue 1575 A 60" - 3 1/4
B 45" - 2 1/2, 60" - 2



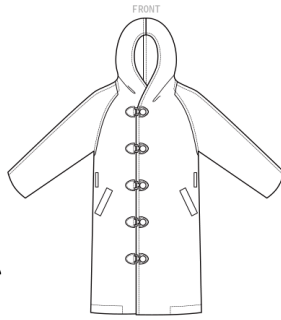
Vogue 1574 45" - 4, 60" - 3
Vogue 1569 A 45" - 2, 60" - 1 3/8
B 45" - 2 1/2, 60" - 1 3/4



Vogue 1568 A, B 60" - 1 3/4



Vogue 1564
45" - 6, 60" - 4



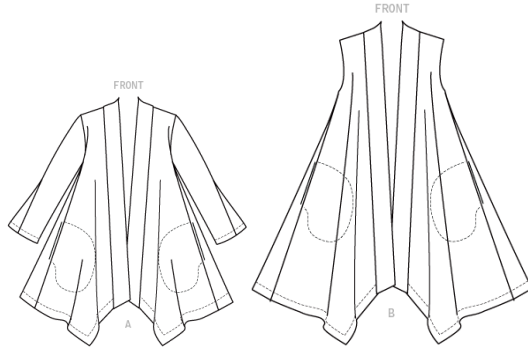
Vogue 1552 A 60" - 2 3/8
Contrast A 60" - 7/8, B 60" - 2 3/8



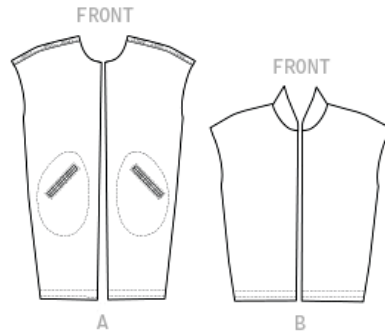
Vogue 1541
A 45" - 3 3/4, 60" - 2 7/8
B 45" - 2 1/8, 60" - 1 3/4



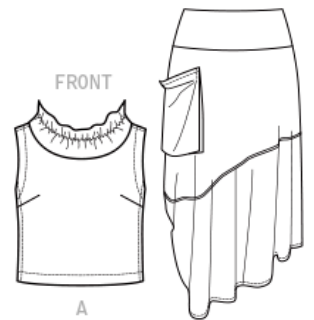
Vogue 1540 A 60" - 3, B 60" - 3 3/4



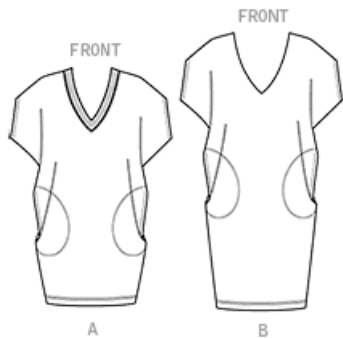
Vogue 1528 A 45" - 2 1/2, 60" - 2 1/4
B 45" - 2, 60" - 2 1/8



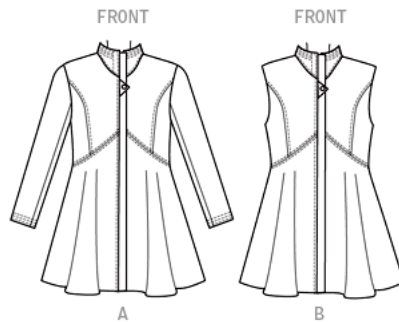
Vogue 1515 A 45", 60" - 1 3/4
B 60" - 2 1/2, C 45" - 2 3/4, 60" - 2



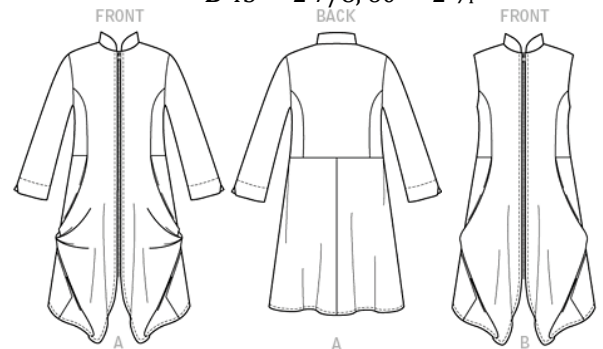
Vogue 1496 A 45" - 3, 60" - 2 1/2
B 45" - 3 1/8, 60" - 2 7/8



Vogue 1494 A 45" - 3 5/8, 60" - 2 3/4
B 45" - 3 1/2, 60" - 2 1/2

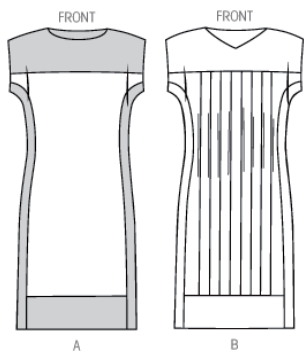


Vogue 1456 A 45" - 3 1/2, 60" - 2 3/4
B 45" - 2 7/8, 60" - 2 1/4



Vogue 1390

A 45" - 1 3/4, B 45" - 4
60" - 1 60" - 3



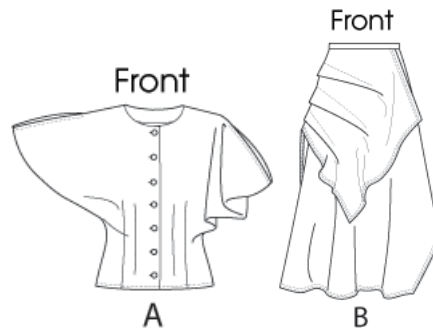
Vogue 1356

A, B 45" - 5 1/2, 60" - 4 1/2
C 45", 60" - 2 3/8



Vogue 1333

A 45" - 2 1/2, 60" - 1 3/4
B 60" - 3 1/2



Vogue 1234

A 60" - 3 1/2



Today's Fit Sizing in Vogue (inches)

Size	A	B	C	D	E	F	G	H	I	J
Bust	32	34	36	38	40.5	43	46	49	52	55
Waist	26.5	28.5	30.5	32.5	35	37.5	41.5	44.5	47.5	50.5
Hip	34.5	36.5	38.5	40.5	42.5	45	48.5	51	54	57