

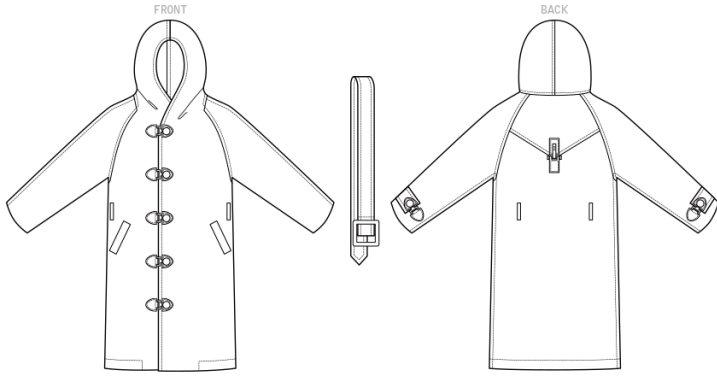
Today's Fit by Sandra Betzina

General fabric size requirements are listed to give you an idea of what you will need.

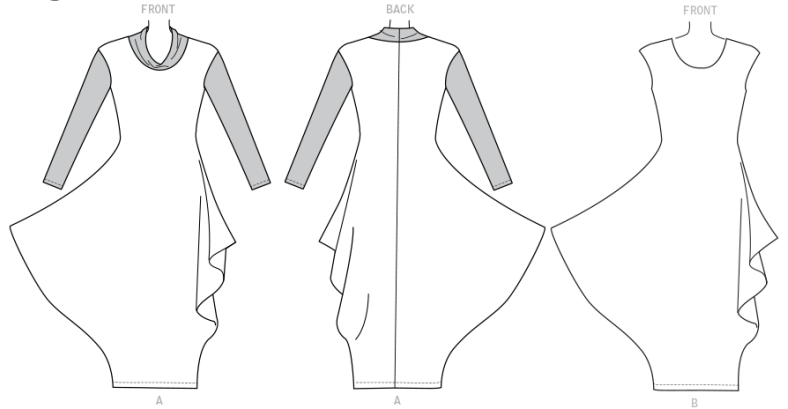
Go to WWW.POWERSEWING.COM to see Sandra's latest fashions.

**Pattern illustrations are below their assigned pattern numbers*

Vogue 1564 45" - 6, 60" - 4



Vogue 1552 A 60" - 2 3/8, **Contrast A** 60" - 7/8 **B** 60" - 2 3/8



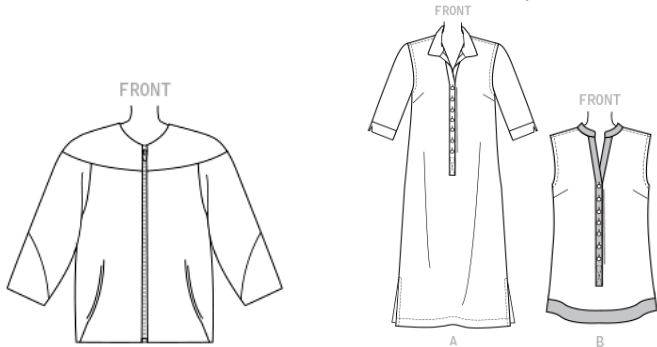
Vogue 1541

A 45" - 3 3/4, 60" - 2 7/8

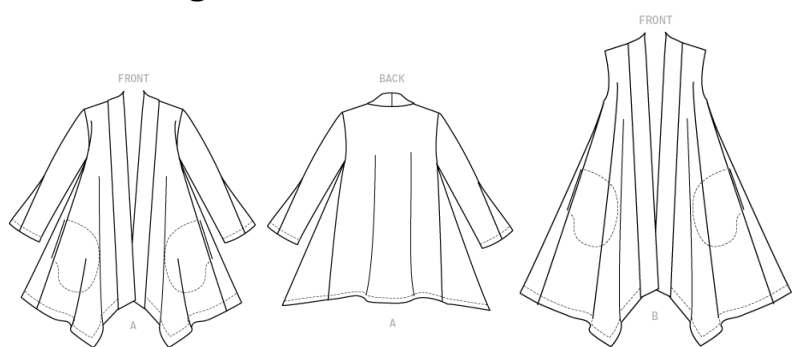
B 45" - 2 1/8, 60" - 1 3/4

Vogue 1549

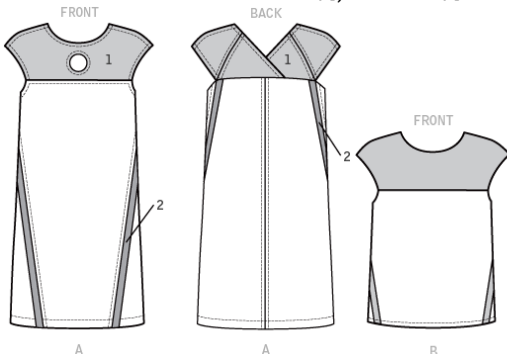
A 45" - 3, 60" - 2 1/4



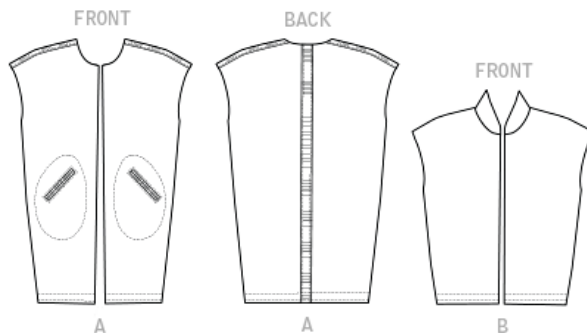
Vogue 1540 **A** 60" - 3, **B** 60" - 3 3/4



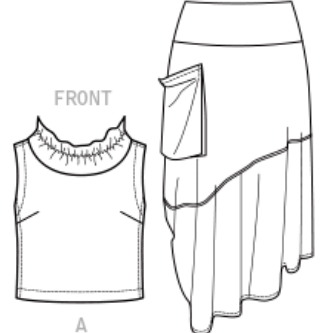
Vogue 1530 **A** 60" - 1 1/4, **B** 60" - 3/4
Contrast A 60" - 1 3/4, **B** 60" - 3/4



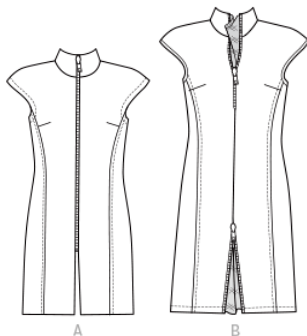
Vogue 1528 **A** 45" - 2 1/2, 60" - 2 1/4
B 45" - 2, 60" - 2 1/8



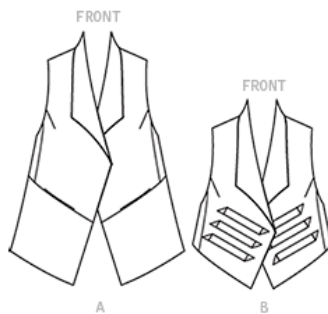
Vogue 1515 **A** 45", 60" - 1 3/4
B 60" - 2 1/2, **C** 45" - 2 3/4, 60" - 2



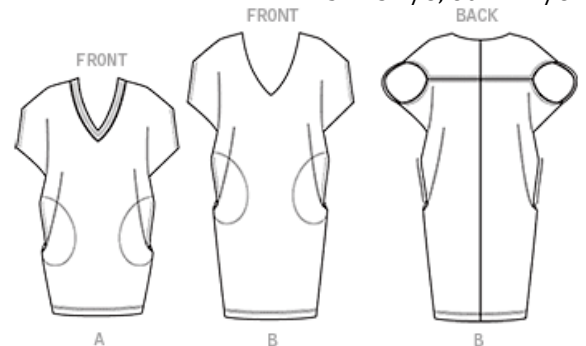
Vogue 1510 **A** 45" - 2 3/4, 60" - 2 1/2
B 45" - 3, 60" - 2 3/4



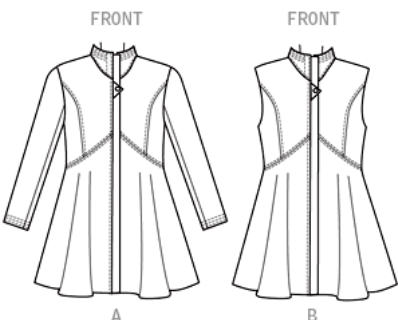
Vogue 1504 **A** 45" - 2 3/4, 60" - 2
B 45" - 1 5/8, 60" - 1 1/2



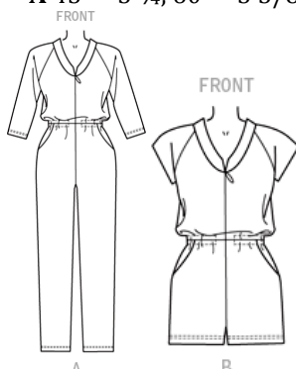
Vogue 1496 **A** 45" - 3, 60" - 2 1/2
B 45" - 3 1/8, 60" - 2 7/8



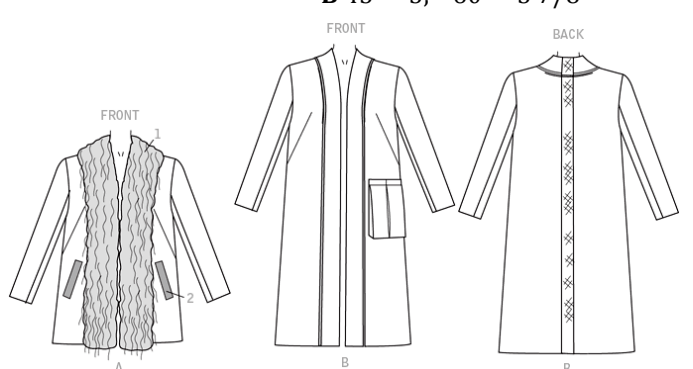
Vogue 1494 **A** 45" - 3 5/8, 60" - 2 3/4
B 45" - 3 1/2, 60" - 2 1/2



Vogue 1483
A 45" - 5 1/4, 60" - 3 5/8

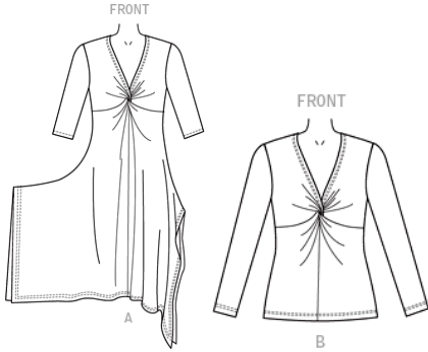


Vogue 1478 **A** 45" - 3 1/4, 60" - 2 1/2
B 45" - 5, 60" - 3 7/8

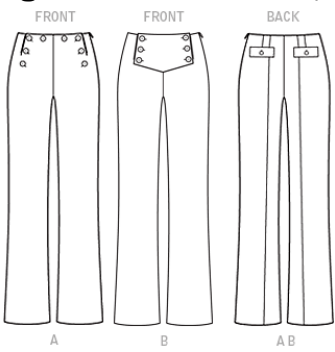


Vogue 1477

A 60" - 2 3/4 B 60" - 1 3/4

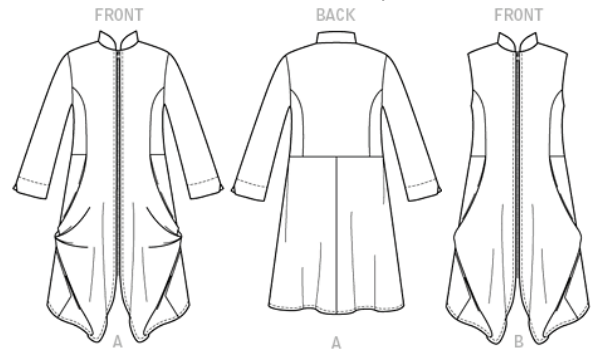


Vogue 1464 A, B 60" - 2 3/8

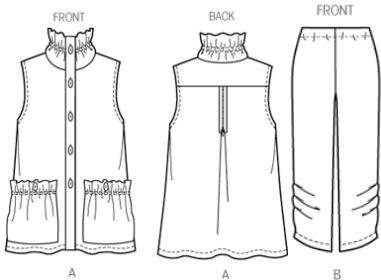


Vogue 1456 A 45" - 3 1/2, 60" - 2 3/4

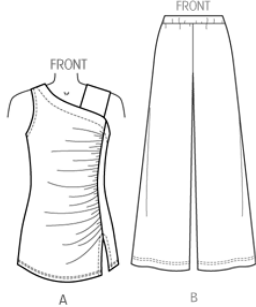
B 45" - 2 7/8, 60" - 2 1/4



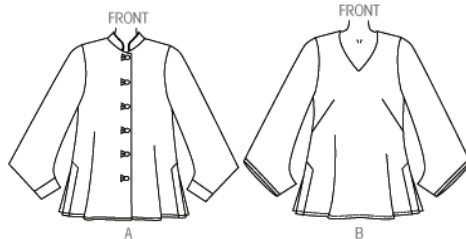
Vogue 1453 A 60" - 2 1/2 B 60" - 2 1/4



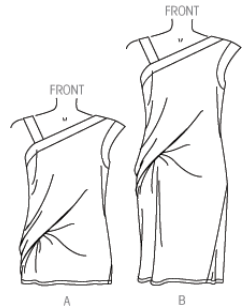
Vogue 1452 A 60" - 1 3/8 B 60" - 2 1/2



Vogue 1443 A 45" - 2 7/8 60" - 2 1/8

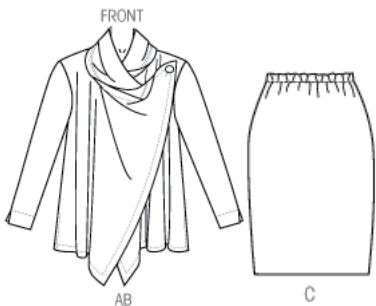


Vogue 1442 A 45" - 2 1/8 A 60" - 2, B 60" - 2

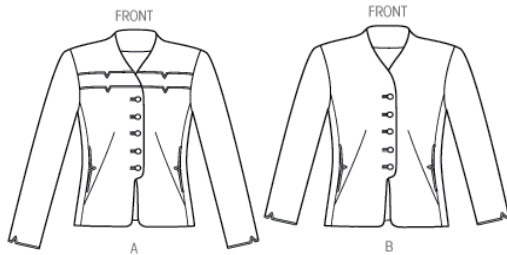


Vogue 1430

A, B 45" - 4 5/8, 60" - 3 1/2 C 60" - 3/4



Vogue 1418 A 45" - 2 1/2, 60" - 2 B 45" - 2 7/8, 60" - 2



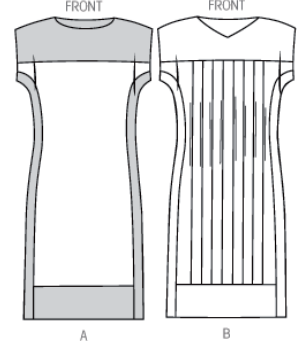
Vogue 1411

A 60" - 2

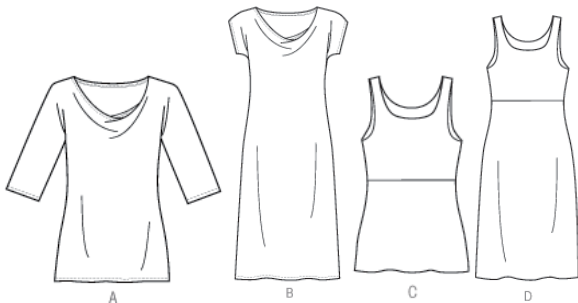


Vogue 1390

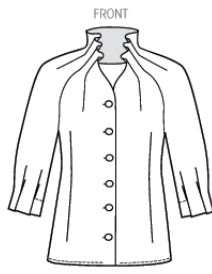
A 45" - 1 3/4, B 45" - 4 60" - 1 60" - 3



Vogue 1386 A 60" - 1 3/4 B 60" - 2 3/4 C 60" - 1 5/8 D 60" - 3 3/8



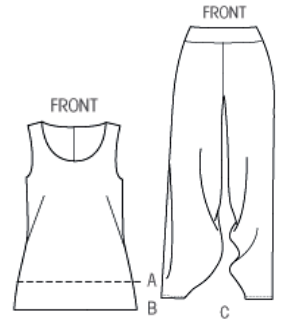
Vogue 1385 45" - 3, 60" - 2 1/4



Vogue 1375 A 60" - 2 1/2



Vogue 1355 A, B 60" - 1 C 60" - 2 1/2



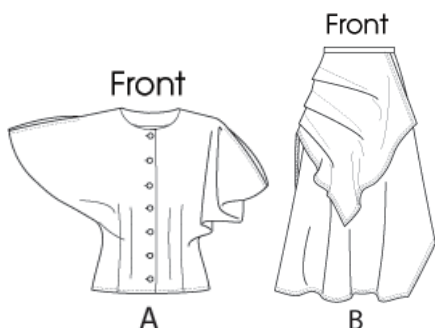
Vogue 1356

A, B 45" - 5 1/2, 60" - 4 1/2 C 45", 60" - 2 3/8



Vogue 1333

A 45" - 2 1/2, 60" - 1 3/4 B 60" - 3 1/2



Vogue 1297 A 60" - 4 1/2 B 60" - 3 1/2



Vogue 1234 A 60" - 3 1/2



Today's Fit Sizing in Vogue (inches)

Size	A	B	C	D	E	F	G	H	I	J
Bust	32	34	36	38	40.5	43	46	49	52	55
Waist	26.5	28.5	30.5	32.5	35	37.5	41.5	44.5	47.5	50.5
Hip	34.5	36.5	38.5	40.5	42.5	45	48.5	51	54	57